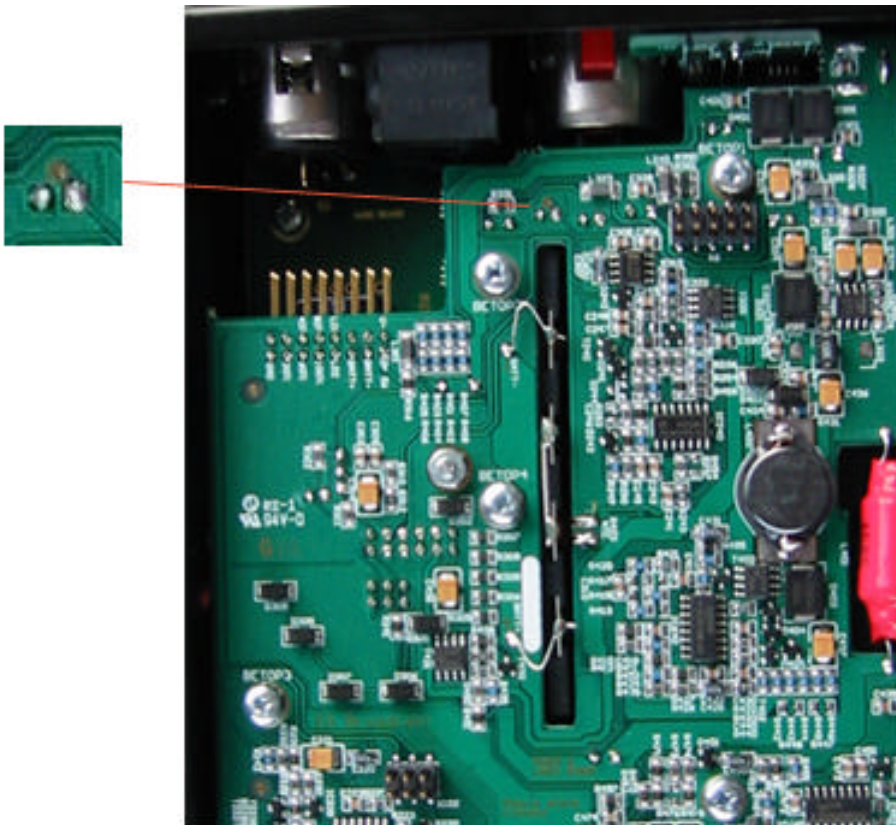


Disable the auto switch off function:

Momentary pushing the on/off switch will switch the unit on. Holding the button for a few seconds will cause the unit to switch off. To preserve power the unit will automatically switch off if not active for more than approx. 10 minutes.

You can disable this auto off function by changing an internal setting.



PCB V2 (SN > 100)

S25PCB V2 On the PCB between the battery holder and the rear there is an empty solder pad with an interruption as shown in the picture. Solder the 2 halves together to disable the auto-shut-off function when used with batteries.

Use as a stationary hybrid:



PCB version 2 (SN > 099) can also be used as a stationary hybrid e.g. in areas without a standard telephone infrastructure.

A switch is hidden behind the hole on the left side panel. (The hole closest to the back of the unit) This is the charger on/off switch. You can operate the switch with e.g. a pen or paperclip. The blue battery LED's will extinguish in this mode.

In this mode you can also use this unit with the external power supply connected and no batteries inside. The unit will not switch off automatically.

S25V2